

**Business Facilitation Advisory Committee  
Food Business and Related Services Task Force**

**New Measures to Enhance the Control of  
Application Process for Water Supply to Inside Service**

**Purpose**

This paper briefs members on the recent measures to enhance the control of inside service, particularly those related to application of food business for water supply.

**Background**

2. Arising from the recent incidents of excess lead found in drinking water of some public housing estates, there is a grave concern by the public on the safety of drinking water and the overall control of the application process for water supply to inside service. The flow chart of the application for water supply to restaurants is at **Annex**. The Water Supplies Department (WSD) has recently introduced a number of new measures related to application for water supply to enhance the control of inside service.

**New Control Measures**

*Control of water supply pipes and fittings*

3 WSD has all along required all pipes and five types of fittings (drop-off tap, stop valve, gate valve, ball valve and combination fitting) to be reported in Form WWO46 (Application for Constructing, Installing, Altering or Removing an Inside Service or Fire Service) for approval. WSD has now expanded the list of pipes and fittings to be reported<sup>1</sup> in Form WWO46 for approval by stages, subject to risk-based analysis. WSD has made reference to relevant overseas experience on quality control of pipes and fitting and imposed a maximum validity period for general acceptance of pipes and fittings (i.e. a maximum period of 5 years). When the validity period is expired, the suppliers

---

<sup>1</sup> The updated list of pipes and fittings to be reported can be accessed at [http://www.wsd.gov.hk/filemanager/en/content\\_138/annex\\_to\\_wwo46.pdf](http://www.wsd.gov.hk/filemanager/en/content_138/annex_to_wwo46.pdf)

or relevant parties should re-apply, with updated testing reports, for approval so as to ensure the pipes and fittings comply with the latest requirements of Waterworks Regulations. If soldering is used for connecting copper pipes in the plumbing works, the licensed plumber should submit supporting document of lead free grade soldering materials being used.

#### Commencement and inspection of plumbing works

4 Plumbing works shall commence only after the Water Authority (WA)'s permission is obtained. To ensure water safety, during inspection of newly installed plumbing works, non-destructive tests on solder joints shall be carried out to test the lead content of soldering materials. A detailed inspection checklist will be used to record the inspection results. In addition, new parameters of four kinds of heavy metals (including lead) have been added to the tests of water samples from newly installed fresh water supply system and the number of water samplings has been increased.

#### **Business Facilitation Initiatives**

5. To minimize the possible business impact, WSD has taken the following initiatives to facilitate business compliance with the new control measures -

- (a) The number of laboratories accepted by WSD for testing of pipes and fittings has been increased from 4 to 15 to enhance the testing capacity;
- (b) A list of hotlines with the contacts of business facilitation officers and case officers for enquiry on the progress of applications for water supply is promulgated on WSD's website ([http://www.wsd.gov.hk/filemanager/en/share/pdf/list\\_case\\_officers.pdf](http://www.wsd.gov.hk/filemanager/en/share/pdf/list_case_officers.pdf));
- (c) An ad-hoc task group chaired by the Deputy Director of Water Supplies and comprising members from trade associations, suppliers of pipes and fittings, contractors and accredited laboratories has been formed to steer, monitor and review the implementation of the new improvement measures by WSD for the control of the construction of the inside service and fire service;
- (d) Transitional arrangement until 1 April 2016 has been put in place in which WA will accept the installation of pipes and fitting without valid general acceptance in the non-potable water supply system;

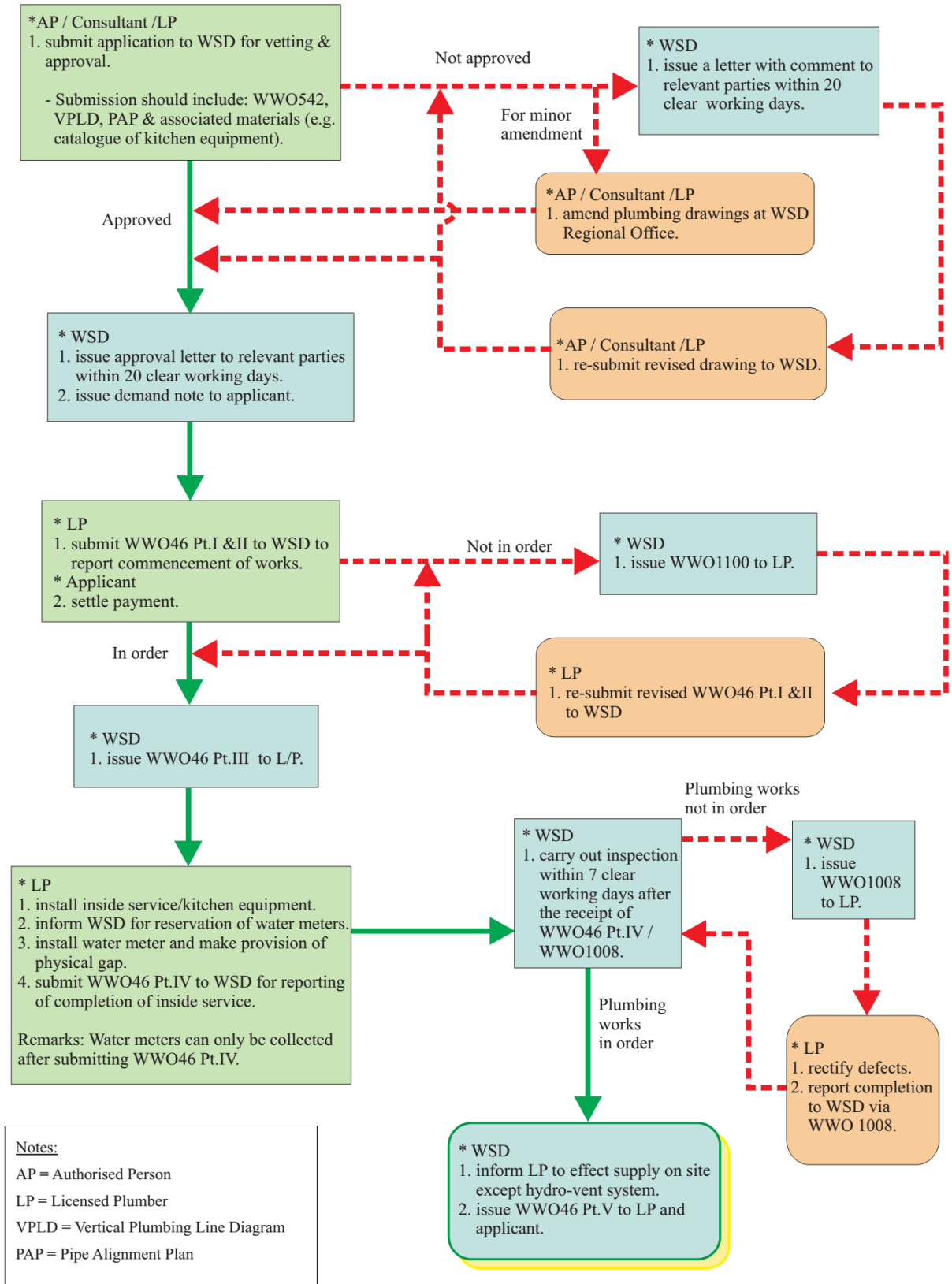
- (e) Transitional arrangement until 1 April 2016 has been put in place under which WA will grant permission for commencement of plumbing works where some of the pipes and fittings to be reported are yet to obtain WA's general acceptance, provided that the licensed plumber undertakes to provide valid general acceptance before final inspection; and
- (f) To streamline the inspection process, WSD is reviewing the inspection checklist and exploring the feasibility of accepting inspection reports, including site photos and relevant records, provided by licensed plumbers before site inspection. The department is also exploring the feasibility of independent checking of plumbing proposal by professional bodies.

### **Way Forward**

6. Members are invited to note the content of this paper and offer comments, if any.

**Water Supplies Department  
January 2016**

# Flow Chart - Application for Water Supply to Food Business (Restaurant) / Kitchen



**Notes:**  
 AP = Authorised Person  
 LP = Licensed Plumber  
 VPLD = Vertical Plumbing Line Diagram  
 PAP = Pipe Alignment Plan